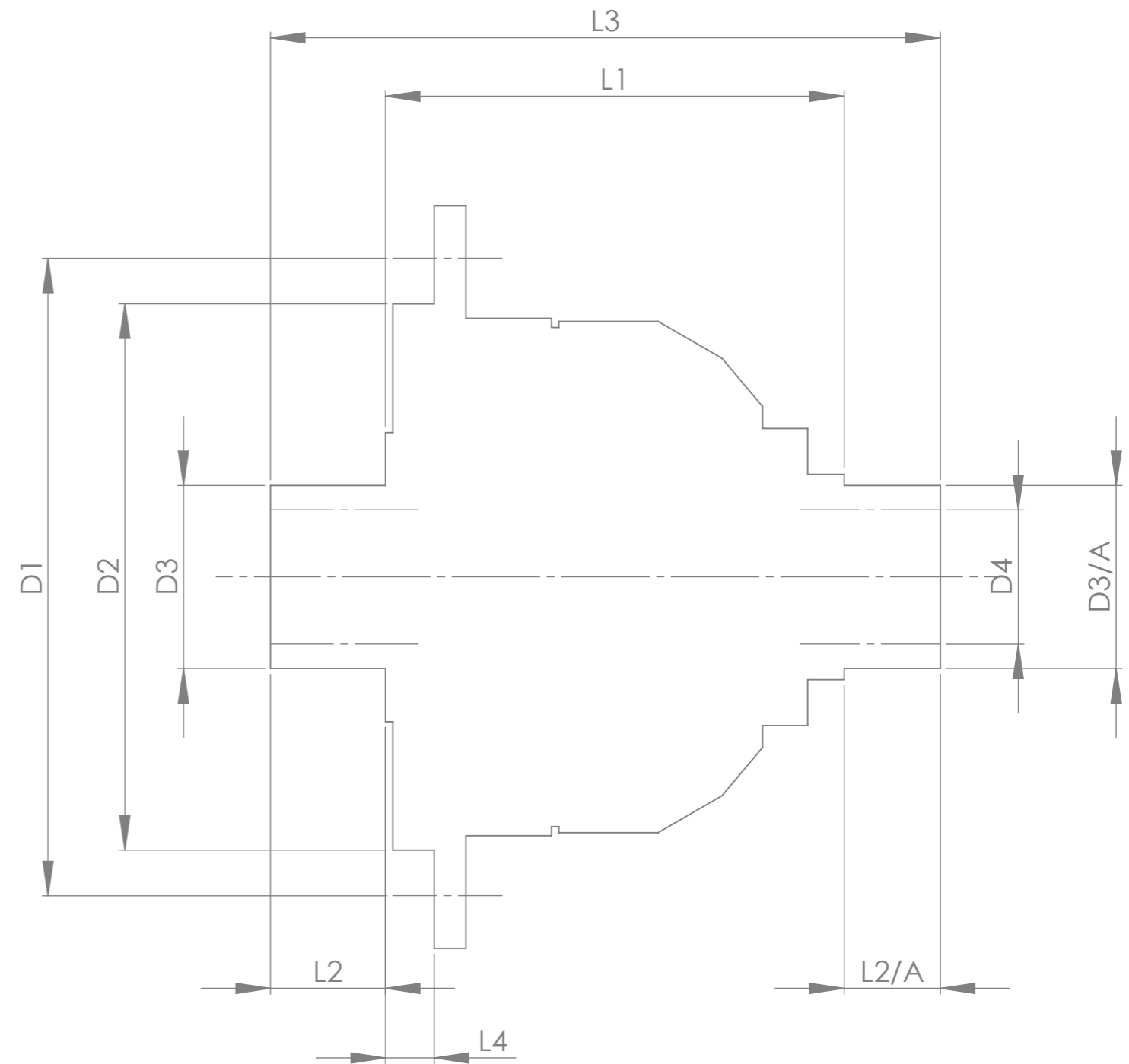


		INCH	MM
CROWN WHEEL BOLT PCD	D1	5.039	128
No. OF BOLTS		8	
THREAD / THRO' HOLE		0.374	9.5
CROWN WHEEL SPIGOT DIA	D2	4.291	109.0
FLANGE END BEARING DIA	D3	1.614	41.0
SMALL END BEARING DIA	D3/A	1.500	38.1
BEARING DISTANCE	L1	3.770	95.8
SPIGOT LENGTH	L2	0.861	21.9
	L2/A	0.842	21.4
OVERALL LENGTH	L3	5.472	139.0
BEARING/CROWN WHEEL	L4	0.531	13.5
BORE	D4	1.124	28.6
DRIVE SHAFT SPLINE:-			
No. OF TEETH		33	
PITCH		32/64 D.P.	
TYPE		FILLET ROOT SIDE FIT	
PRESSURE ANGLE		37.5°	



TITLE F.W.D. DIFF DATA SHEET.

SCALE 1:1 U.O.S. SHEET 1 OF 1

Drg. No. QDF35R

Quaife Design & Development.

IF IN DOUBT, ASK.

THIS DRAWING OR DESIGN IS STRICTLY CONFIDENTIAL & THE COPYRIGHT THEREIN THE EXCLUSIVE PROPERTY OF RT QUAIPE ENGINEERING LTD. AND MAY NOT BE USED COPIED OR EXHIBITED WITHOUT THEIR WRITTEN PERMISSION.

FINISH. MACH, GRIND@G
 LIMITS. FRACT. ± 1/64".
 DEC. ± 0.005".
 MATERIAL.
 TREATMENT.
 ISSUE. 01 DATE. 29/06/2023
 DRAWN BY. J.B.P.
Used In. VW UP! GTI