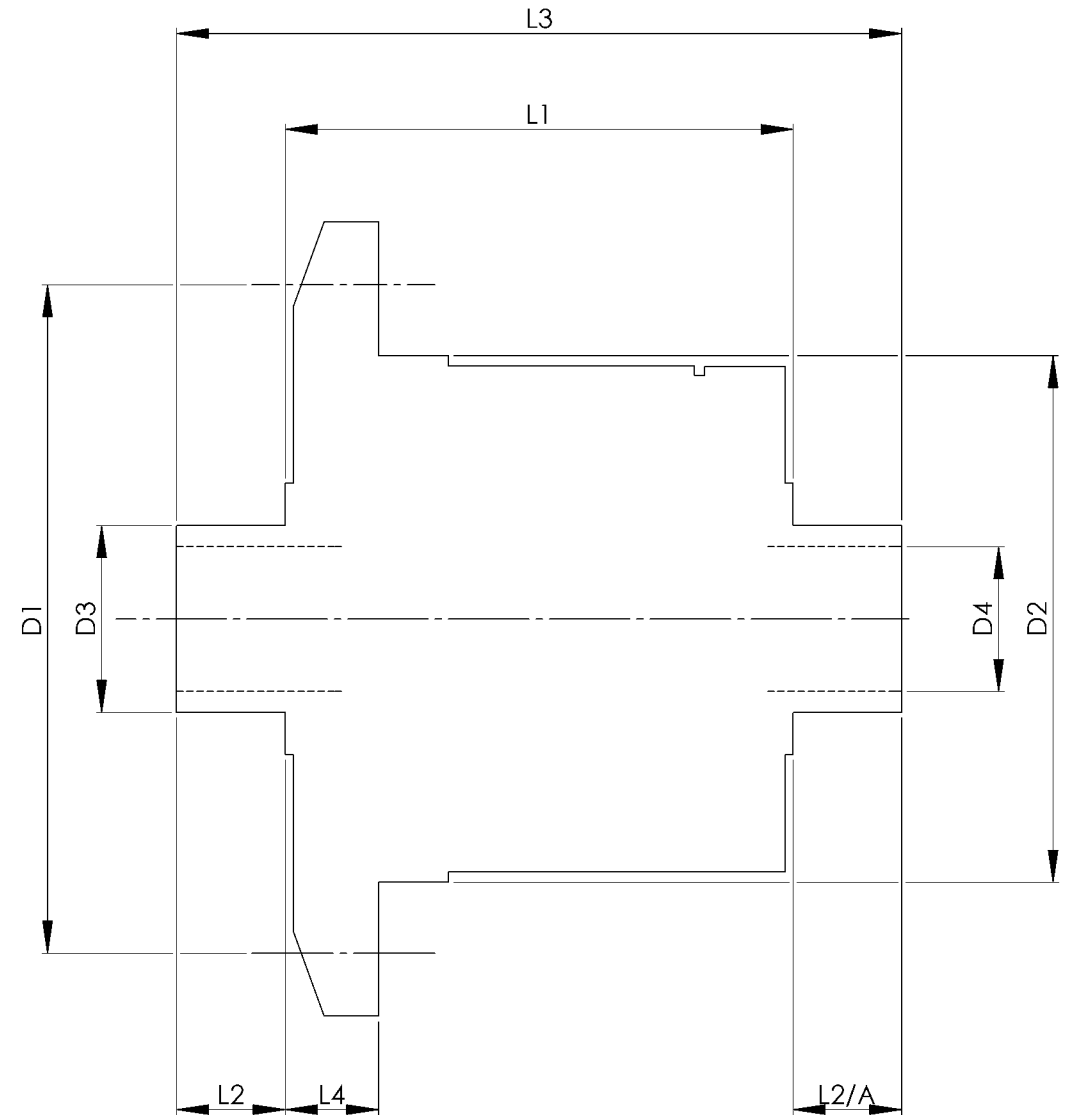


		INCH	MM
CROWN WHEEL BOLT PCD	D1	5.750	146
No. OF BOLTS		10	10
THREAD / THRO' HOLE		0.437	11.1
CROWN WHEEL SPIGOT DIA	D2	4.6268	117.5
BEARING DIA	D3	1.6264	41.3
BEARING DISTANCE	L1	5.670	144.0
SPIGOT LENGTH	L2	0.830	21.1
	L2/A	0.830	21.1
OVERALL LENGTH	L3	7.330	186.2
BEARING/CROWN WHEEL	L4	1.240	31.5
BORE	D4	1.201	30.5
DRIVE SHAFT SPLINE:-			
No. OF TEETH		23	
PITCH		20/40 DP	
TYPE		FLAT ROOT	SIDE FIT
PRESSURE ANGLE		30 DEG	



TITLE R.W.D. DIFF DATA SHEET.

SCALE 1:1 U.O.S. SHEET 1 OF 1

**Drg. No. QDF14Z**

**Quaife Design & Development.**

IF IN DOUBT, ASK.

THIS DRAWING OR THE DATA IT CONTAINS IS THE PROPERTY OF QUAIFF DESIGN & DEVELOPMENT LTD. AND IS NOT TO BE REPRODUCED OR TRANSMITTED IN ANY FORM OR BY ANY MEANS WITHOUT THE WRITTEN PERMISSION OF QUAIFF DESIGN & DEVELOPMENT LTD.

FINISH. MACH. GRIND@G  
 LIMITS. FRACT. ± 1/64".  
 DEC. ± 0.005".  
 MATERIAL.  
 TREATMENT.  
 ISSUE. 01 DATE. 18.5.05  
 DRAWN BY. M.L.M.

**Used In. FORD SIERRA 7 1/2"**